

## Couplers

### TYPE N HIGH POWER DIRECTIONAL COUPLERS FOR Tx AND CDPD REQUIREMENTS

- Single, Dual and New Tri-Coupler Models
- High Power, 500W CW Rating into All Load Conditions
- Excellent Directivity for Precise Power and Spectrum Analysis Requirement
- System Transparent - Low VSWR, Low Insertion Loss
- Extremely Low Frequency Sensitivity
- Low IM Product Designs
- AMPS, GSM, TDMA, CDMA, CDPD Inline, Systems Applications
- Other Connector Types Available on Special Order Basis



### SPECIFICATIONS

#### Dual Directional Types – High Power Tx Applications

| FREQ RANGE (MHz) | MODEL NO. | NOMINAL COUPLING (dB) | DIRECTIVITY dB (Min) | INSERTION LOSS dB (Max) | VSWR               |                      | FREQ. SENSITIVITY dB (Max) | POWER         |            | CONNECTORS |             | WEIGHT Gr |
|------------------|-----------|-----------------------|----------------------|-------------------------|--------------------|----------------------|----------------------------|---------------|------------|------------|-------------|-----------|
|                  |           |                       |                      |                         | PRIMARY LINE (Max) | SECONDARY LINE (Max) |                            | AVERAGE (Max) | PEAK (Max) | MAIN LINE  | BRANCH LINE |           |
| 820-960          | 30300D    | 30 ±1.0               | 30                   | 0.15                    | 1.07               | 1.10                 | ±0.20                      | 500W          | 10 kW      | N          | N           | 700       |

#### Single Direction Types – CDPD/Tx Applications

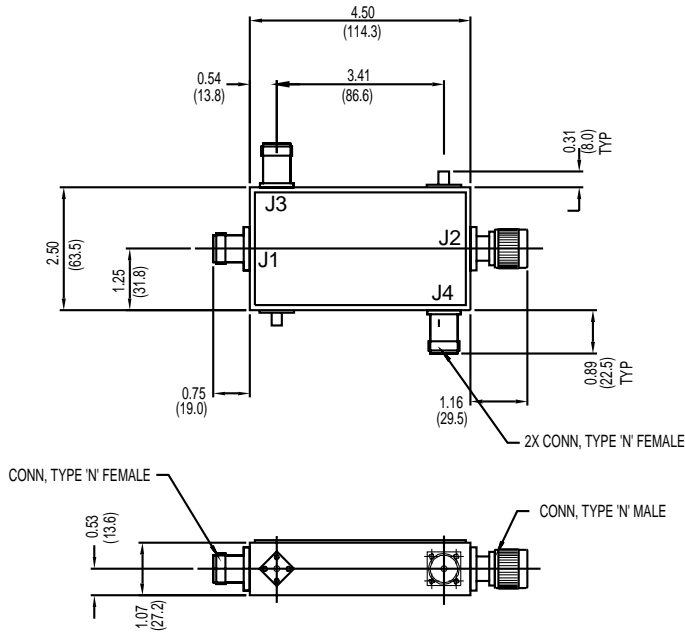
| FREQ RANGE (MHz) | MODEL NO. | NOMINAL COUPLING (dB) | DIRECTIVITY dB (Min) | INSERTION LOSS dB (Max) | VSWR               |                      | FREQ. SENSITIVITY dB (Max) | POWER         |            | CONNECTORS |             | WEIGHT Gr |
|------------------|-----------|-----------------------|----------------------|-------------------------|--------------------|----------------------|----------------------------|---------------|------------|------------|-------------|-----------|
|                  |           |                       |                      |                         | PRIMARY LINE (Max) | SECONDARY LINE (Max) |                            | AVERAGE (Max) | PEAK (Max) | MAIN LINE  | BRANCH LINE |           |
| 820-960          | 30470     | 30 ±1.0               | 30                   | 0.15                    | 1.07               | 1.10                 | ±0.20                      | 500W          | 10 kW      | N          | N           | 700       |

#### Tri-Coupler (Dual Directional Coupler with Independent Sampler Coupler) Tx Applications

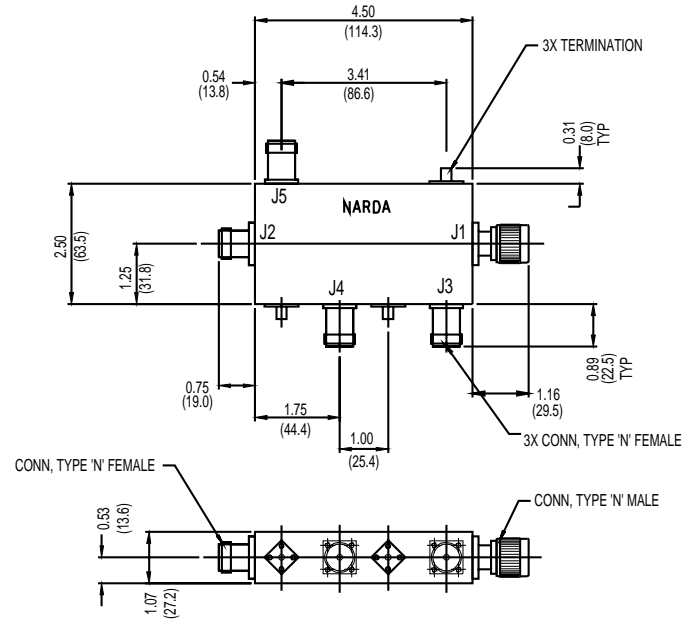
| FREQ RANGE (MHz) | MODEL NO. | NOMINAL COUPLING (dB)                  | DIRECTIVITY dB (Min) | INSERTION LOSS dB (Max) | VSWR               |                      | FREQ. SENSITIVITY dB (Max)     | POWER         |            | CONNECTORS |             | WEIGHT Gr |
|------------------|-----------|--|----------------------|-------------------------|--------------------|----------------------|--------------------------------|---------------|------------|------------|-------------|-----------|
|                  |           |  |                      |                         | PRIMARY LINE (Max) | SECONDARY LINE (Max) |                                | AVERAGE (Max) | PEAK (Max) | MAIN LINE  | BRANCH LINE |           |
| 820-980          | 30600     | J3 30 ±2.0<br>J4 30 ±2.0<br>J5 30 ±1.0 | 20<br>20<br>30       | 0.2                     | 1.10               | 1.20                 | J3 ±1.0<br>J4 ±1.0<br>J5 ±0.25 | 500W          | 5 kW       | N          | N           | 800       |

\* Note J3 and J4 are forward power coupled ports and J5 is reflected power coupled port

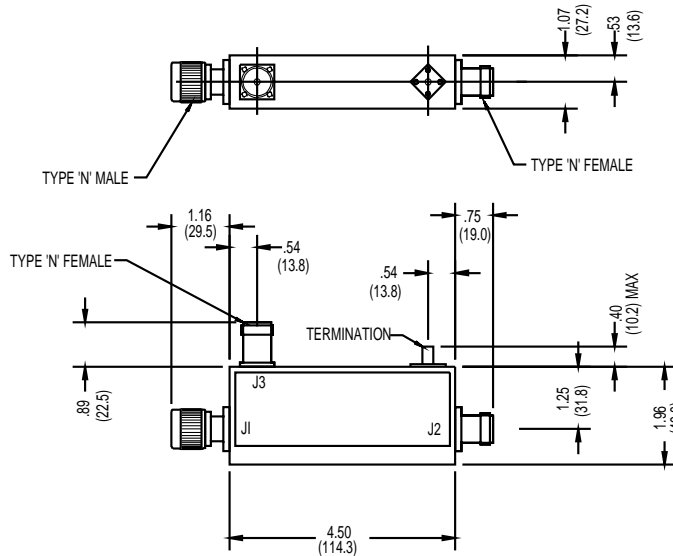
# Couplers



**30300D**



**30600**



**30470**